

Alpha Psi Omega & NextWave Series Presents...

LOVE ALONE

by Deborah Salem Smith

Directed by Chlo Love

November 5 & 6 2021

Hensel Phelps Theatre

Union Colony Civic Center

UNC

UNIVERSITY OF NORTHERN COLORADO

School of Theatre Arts and Dance

Love Alone is presented by special arrangement with Dramatists Play Service, Inc., New York.

LOVE ALONE

By Deborah Salem Smith

World Premiere Produced by Trinity Repertory Company

Artistic Director - Curt Columbus

Executive Director - Michael Gennaro

Filming and/or video taping of this production is strictly prohibited.

There will be one 15 intermission in this performance.

SYNOPSIS:

Love Alone tells the tragically beautiful take on the struggles that LGBTQ people must face when the worst happens. Losing a loved one is never easy, but for Helen Warren, losing her partner, Susan, leads to even more pain as she has no rights to medical files and the hospital pushes her aside. She and her daughter, Clementine, must wade through the waters of grief while also searching for answers. Meanwhile, Dr. Becca Neal must learn to live with her first "bad outcome" and overcome hardships and reputation hits that come. Will they find what they so heavily desire in the end? With a rock and roll twist, Love Alone aches to ask the question: if you can't hate love, would you want power?

CAST

Helen Warren – Miranda DeWald

Clementine – Nicole Falzarano

Dr. Becca Neal – Megan Chang

J.P. Whitman – Aaron Assaf

Mr. Rush – Aidan Blank

Decedent Services Rep., Nurse &
Lawyer – Gabriella Pafumi

CREATIVE TEAM

Director & Intimacy Coordinator – Chlo Love

Assistant Director – Sarah Long

Stage Manager – Jaycee Howard

Scenic Designer – Adrian Luka

Lighting/Sound Designer – Travis Bomkamp

Stylist – Angelica Walters

Music Directors – Raven Vilate & Micah Wilborn

LOVE ALONE

DIRECTORS' NOTE

When trying to select a play to direct for what I hoped would be, and now is, my Senior Showcase, I came across Love Alone thanks to the Dramatist Play Service Book Club that sends 7 plays quarterly. It was a summer day when I read this show and shortly after, I had a pretty severe fall that broke my collarbone and two of my knee bones. Even as I am typing this for you all, these bones are still healing and I am so grateful the fall wasn't as severe as it could have been. While I was in the hospital for these injuries, I received a white plastic hospital bag that contained what I was wearing when I fell. Coincidentally, Love Alone requires a white plastic hospital bag prop, in which I was scratching my head, trying to figure out how I would obtain such a prop. After selecting Love Alone for my senior showcase because of my connections to the LGBTQ community as well as my personal connections to the overarching plot of this play, having lost a loved one while they were in surgery, I realized the hospital bag I received was exactly what I needed to make my show happen. It seemed like a sign from my Gramps, whom this production is dedicated to, that this is the play I needed to bring to life and share with you all today. After that, it was history, pre-production began, and my creative team and I started making Love Alone a reality.

It is important to me that you know, this play was written before gay marriage was legalized, but this specific production of Love Alone is set in the present, 2021. This present. The actors wear masks throughout this production to protect themselves and others, but the characters also wear masks to protect themselves and their loved ones. In no way do we wish for the audience to simply ignore the masks these characters wear, nor pretend they aren't there at all. Instead, the masks present a tribute to the time, this present, with COVID. My hope in having this show resemble the present this much is to point out to our audience that LGBTQ couples are still struggling for rights in situations very similar to that of Helen Warren. Two people that have been together for 20 years, loved each other, and raised a child together should not be denied medical rights when emergencies like these occur. On top of the grief Helen is struck with, she also has to combat the hospital and push her daughter to file a lawsuit, breaking her own values, and deciding that power is truly what she wants when she cannot have love.

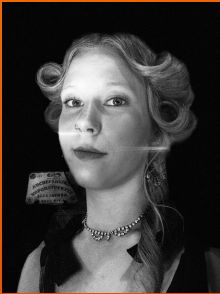
This cast has been an absolute joy to work with. This creative team has been incredible and I can't thank them enough for all of their work on this production. Finally, truly and genuinely, thank you for being here, for supporting us, for supporting this tragically beautiful story of love, loss, and what happens when the two meet. We all hope you enjoy Love Alone.

All my love,
Chlo Love
Director of Love Alone

LOVE ALONE

SENIOR SHOWCASE

Chlo Love (Director) is ecstatic to be presenting their Senior Directing Showcase, through NextWave, to the Northern Colorado community! They are a Senior Theatre Studies and Theatre Education major and is an emerging Director and Intimacy Coordinator. You may have seen her past work in 100 Planes, with SOAPbox Productions, Over and Over Again, by Eva Grace, as the Assistant Director on Mainstage productions The Heiress and Blue, and as the Intimacy Coordinator on Mainstage productions The Flick and Rent. Chlo would like to thank their partner, family, and mentor for their endless support, as well as Miko Coffey and Madelynn Sizer for their constant encouragement throughout this process. In addition, they would like to sincerely thank the whole creative team and cast for making this show happen! Chlo truly hopes you all enjoy this captivating production!
Instagram: [clovesusanna](#)



Jaycee Howard (Stage Manager) is a Senior Design + Technology major emphasizing in Stage Management. She can be seen around UNCO as a Resident Assistant and in the electric shop. You may also see them in 11th Ave Acapella. Recent credits: 2020 Speaks (SM), Aiden Sinclair's Underground (Technician), A Weekend in the Country (SM). They would like to thank Chlo and Sarah for their support; the cast for taking on a challenging show with grace; and the production team for adding their own hard work to put together a complete show. Welcome back, and please keep seeing and supporting theatre and art in all forms.

Adrian Luka (Scenic Designer) is incredibly grateful to have spent one of his last semesters at UNC on this show. He is looking forward to seeing what students take away from Love, Alone. He also hopes that audiences will empathize with this story, and with the LGBT community as a whole.



CAST & CREW



Aaron Assaf (J.P. Whitman) has worked on stage and off stage in many productions. Contributions include being in the production team and building sets for shows like *Rent*, *The Flick*, and the upcoming *Sweat*. Aaron has also been in multiple dance productions and a One Act show. This will be his first acting role in a full length play at the University of Northern Colorado. Special thanks to supportive family and friends for cheering him on in anything he is a part of.



Aidan Blank (Mr. Rush) is a senior Acting major at UNC and is a proud member of STAD's sketch comedy group: Hello My Name Is... . He is so thankful to Chlo Love and the cast/crew of *Love Alone* for this great experience acting as well as teaching movement choreography in this wonderful show! You may have seen his recent work directing and choreographing movement pieces like *My Friend: Dragon* or *Clink Clank: Here Comes Mr. Robot* with SOAPbox Productions. In addition, you may have also seen Aidan's recent performance as Paris/Patroclus in *The Story of the Iliad*. He would like to thank his partner, his family, his roommates, and his friends! Instagram: @aidan_blank



Travis Bomkamp is a Lighting and Sound Designer who recently graduated from UNC. His most recent job was as Sound Engineer for *Macbeth* and his past design credits include Sound for *The House of Bernarda Alba* and Lighting for *The Cherry Orchard*. Other credits include *The Grapes of Wrath*, *By the Way*, *Meet Vera Stark*, and *Jesus Christ Superstar*. He is excited to be working on this production and hopes you all enjoy.

CAST & CREW



Megan Chang (Dr. Becca Neal) is so honored to be involved in this production of *Love, Alone!* She is in her senior year at UNC as musical theatre major. Past credits include Connie in *A Chorus Line*, Catherine in *Pippin*, and Charlie in *Charlie & the Chocolate Factory*. Megan is very excited to help bring this story to life! Enjoy the show!



Miranda DeWald (Hellen Warren) is a Senior Theatre Studies Major at UNC and is ecstatic to be playing Helen in *Love Alone*. Prior UNC credits include Mover in *Macbeth*, Woman in Mourning in *House of Bernarda Alba*, Duchess of Yorkshire in *Richard III* with Bearly Shakespeare, and Mrs. Smith in *Just Like Us* with *Operation: Cheesecake*. Special thanks to Doc Moon and Dr. Harmon for their guidance and support, as well as to the phenomenal cast and creative team of *Love Alone* for this opportunity.



Nikki Falzarano (Clementine) is a senior theatre studies major and is thrilled to be in her first performance at UNC! Previous projects at UNC include *The New Margo*. Nikki would like to thank her family—Mom, Dad, and Sydney for their continued love and support. She would also like to thank the amazing cast and crew of *Love Alone* for the incredible opportunity!



Sarah Long (Assistant Director) is a sophomore Theatre Studies major and has fallen absolutely in love with this show. Being the Assistant Director has been a wonderful opportunity to tell an amazing story, and she is so proud of everyone in the cast and crew. She thanks Chlo Love, Jaycee Howard, and all the folks involved in the show for being loving, kind, and passionate about a story that everyone should go see. I love you all!

CAST & CREW



Gabriella Pafumi (Dec. Services Rep., Nurse, Lawyer) is a freshman in the theatre studies program with an emphasis in directing. She is very excited to be kicking off her second production here at UNC, Love Alone! She most recently played Margery in Creature by Heidi Shrek, with One Another Theatre. In previous roles at East Theatre Company she's played Eurydice in Sarah Ruhl's Eurydice, Meip, in Diary Of Anne Frank, May, in Fool For Love, and Honey, in Who's Afraid of Virginia Woolf. Pafumi is honored to be apart of this process and ready to take on the stage in every sense of the word.



Raven Vilate (Co-Music Director) is from Chandler AZ, and is very excited to be a Co-Music Director for Love Alone! They would like to thank Chlo Love for giving them the amazing opportunity to be part of their Senior Showcase Show, and is so proud of the final product everyone that was part of this team created!



Angelica Walters (Stylist) is a Design and Technology Theatre Major with an emphasis in costume design. She is the stylist for "Love Alone"! She is very excited for everyone to take a look into the characters lives in "Love Alone" through clothing, and how grief plays a huge role in that. She would like to thank Chlo Love for being such a wonderful director, and willing to listen to new ideas and takes on this show. Angelica is so thankful for the support from her friends, and family. Enjoy the show!



Micah Wilborn (Co-Music Director) is a senior Theatre Ed major working on his last few semesters here at UNC, and he is honored to be apart of yet another show under Chlo Love and this production team. Micah's experience in live music with his band Play Writtes, a Greeley based alternative rock group, led him into this role of Co-Music Director with the talented Raven Vilate, and he couldn't be more excited to have a hand in creating this piece. You may have seen Micah's work in 100 Planes, a stage play he Co-Directed with Chlo before and during the COVID-19 pandemic. That show and this are symbols of persistence and boldness through unprecedented times, and Micah could not be more excited to have a hand in allowing art to triumph over fear and uncertainty.

SPECIAL THANKS

The School of Theatre Arts & Dance

The School of Music

Lincoln Emporium Greeley

Rand Harmon

Rebecca Rich

Ken Womble

Shelly Gaza

Rachel Miller

Shay Langley

Raven Vilate